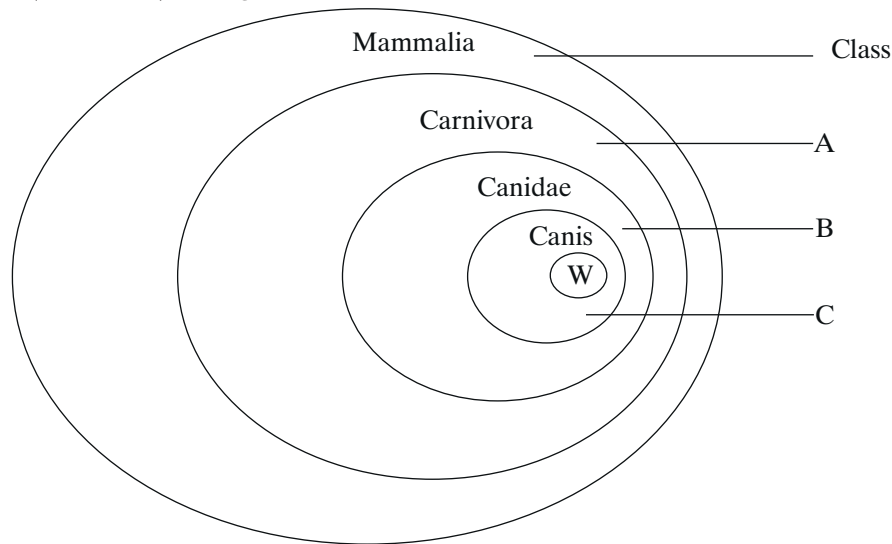


# AQA Examination-style questions

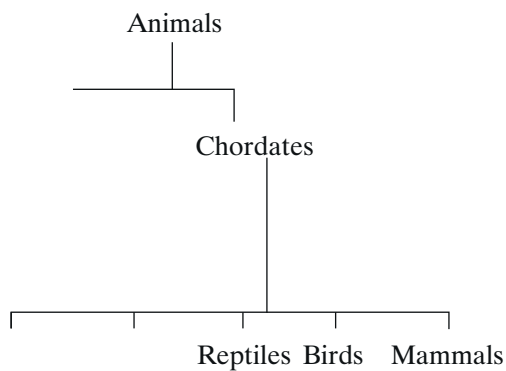
## Chapter 14 Classification

- 1 The mammals form a class called the Mammalia within the animal kingdom. The grey wolf is a species of mammal. **Figure 1** shows the groups within the Mammalia to which the wolf (labelled **W**) belongs.

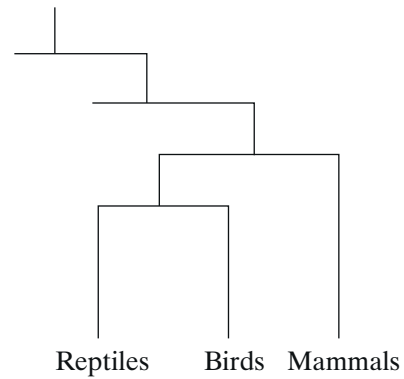


**Figure 1**

- (a) (i) Name the groups labelled A, B and C in **Figure 1**.  
 (ii) The lion, *Panthera leo*, belongs to another group in the Carnivora, called the Felidae. Describe how the information could be added to **Figure 1**, using the letter L to represent the lion species. (3 marks)
- (b) The diagrams below show two systems of classification of mammals. **Figure 2** shows a simple hierarchy. **Figure 3** shows a phylogenetic system.



**Figure 2**



**Figure 3**

- (i) What is meant by a hierarchy?  
 (ii) By reference to **Figures 2 and 3**, explain how a phylogenetic system differs from a simple hierarchy. (4 marks)